

**Retention Study:
Fall-to-Fall Study for
Three Cohorts
&
Three-Year Study of
Fall 2003 Cohort**

**Dr. Sharon L. Yarbrough
Director**

**Office of Institutional Effectiveness, Research, and Planning
Pellissippi State Technical Community College
Knoxville, Tennessee
Spring 2007**

Definitions

Retained: students who returned, who graduated, or who graduated and returned. The others are “missing in action” or “MIA.”

First-Generation Students: students who marked “No” on the College application in response to the question, “Did your mother or father graduate from a 4-year college?”

Fall-to-Fall Retention of All Credit Students: Cohorts 2003F, 2004F, and 2005F

Cohort	All Credit Students		
	Beginning Number	Retained	
		Number	%
2003F-2004F	7759	3716	48%
2004F-2005F	7700	3711	48%
2005F-2006F	7834	3837	49%

Multi-Year Retention Analysis for 2003F Cohort: All Credit-Seeking Students

Cohort	All Credit Students		
	Beginning Number	Retained	
		Number	%
2003F-2004F	7759	3716	48%
2003F-2005F	7759	2808	36%
2003F-2006F	7759	2490	32%

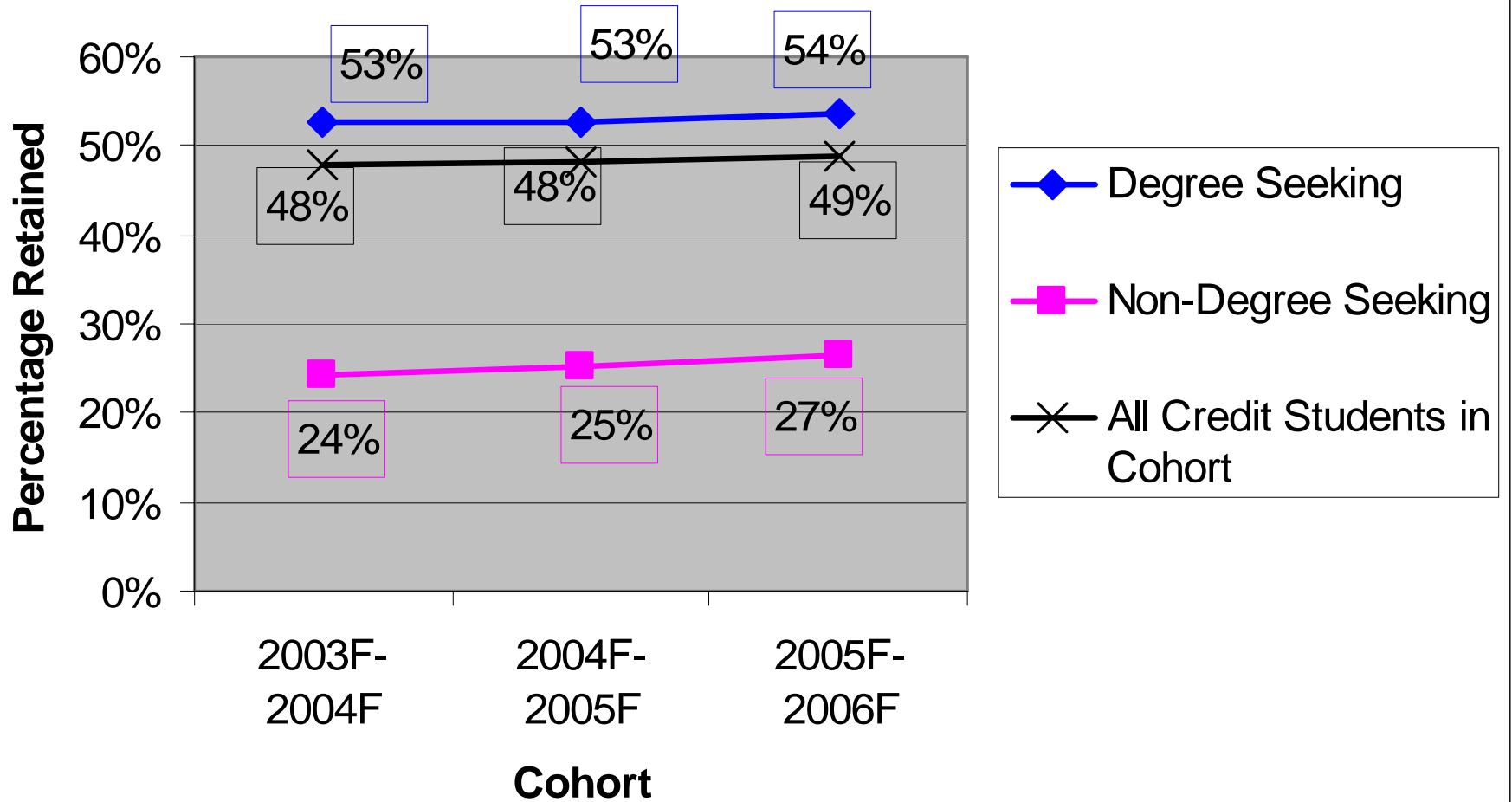
Fall-to-Fall Retention of First-Time, Full-Time Students (FTF): Cohorts 2003F, 2004F, and 2005F

Cohort	FTF		
	Beginning Number	Retained	
		Number	%
2003F-2004F	926	518	56%
2004F-2005F	1027	560	55%
2005F-2006F	1137	650	57%

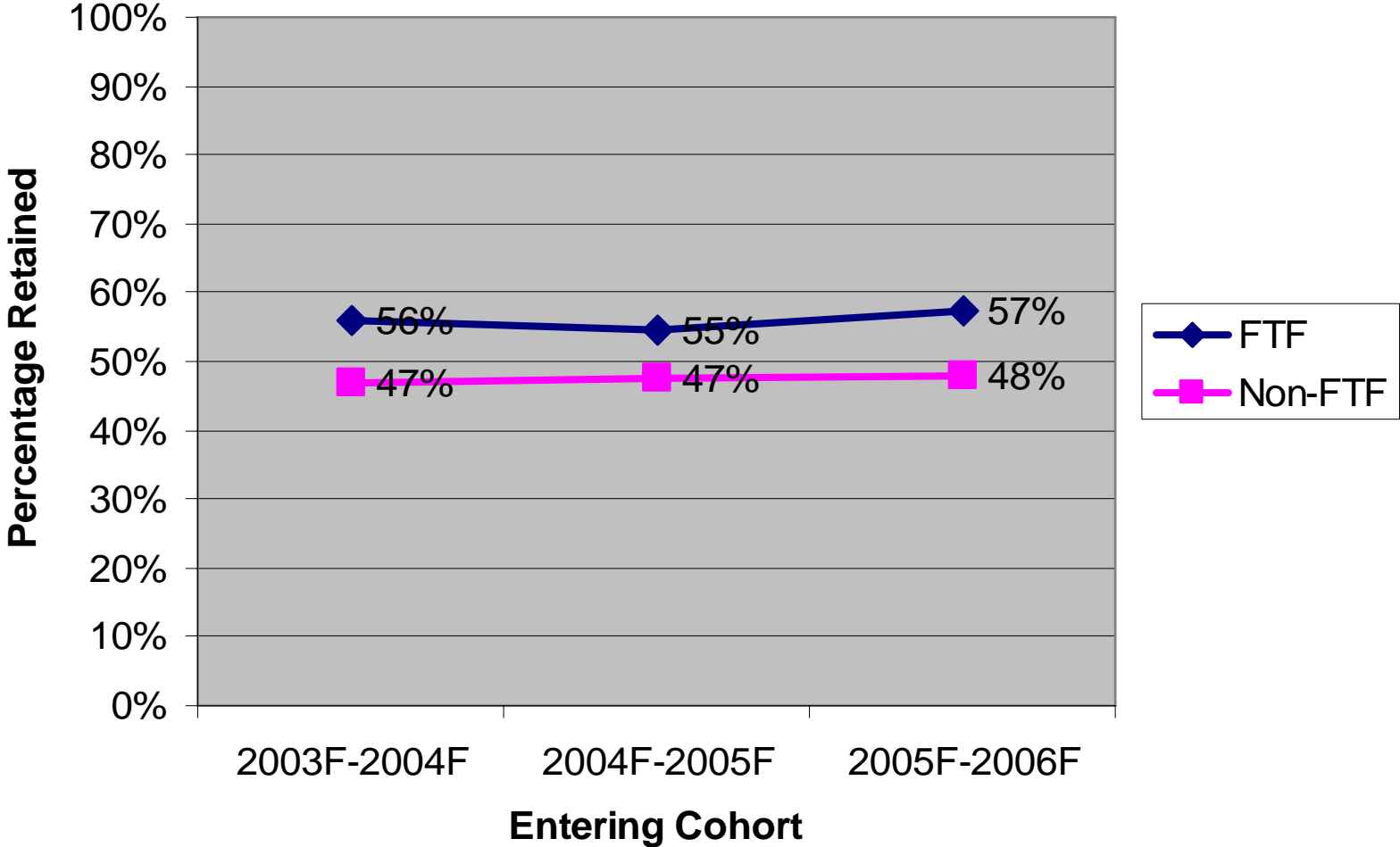
Multi-Year Retention Analysis for 2003F Cohort: First-Time, Full-Time Students (FTF)

Cohort	FTF		
	Beginning Number	Retained	
		Number	%
2003F-2004F	926	518	56%
2003F-2005F	926	362	39%
2003F-2006F	926	280	30%

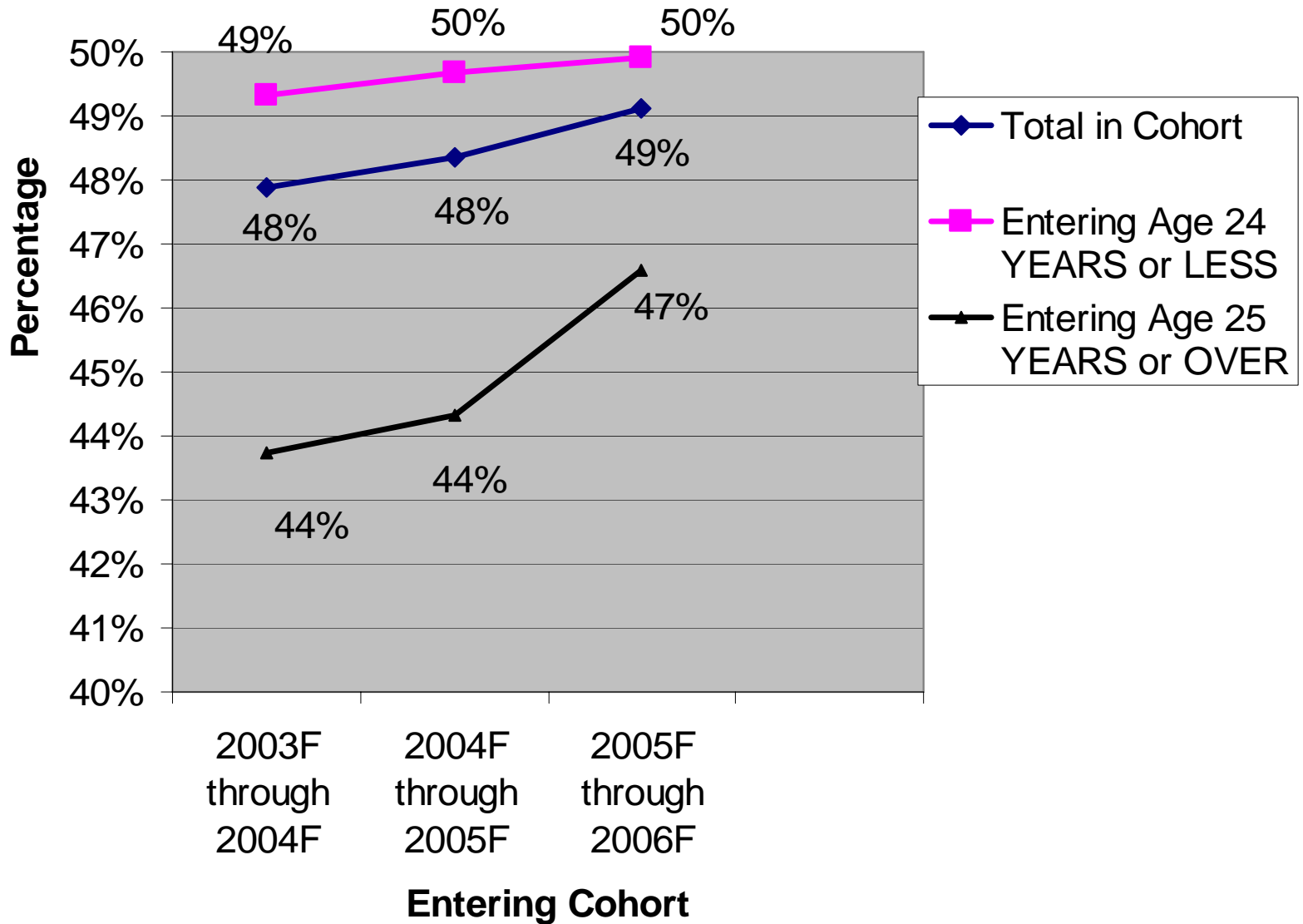
One-Year Retention Rates for All Credit Students



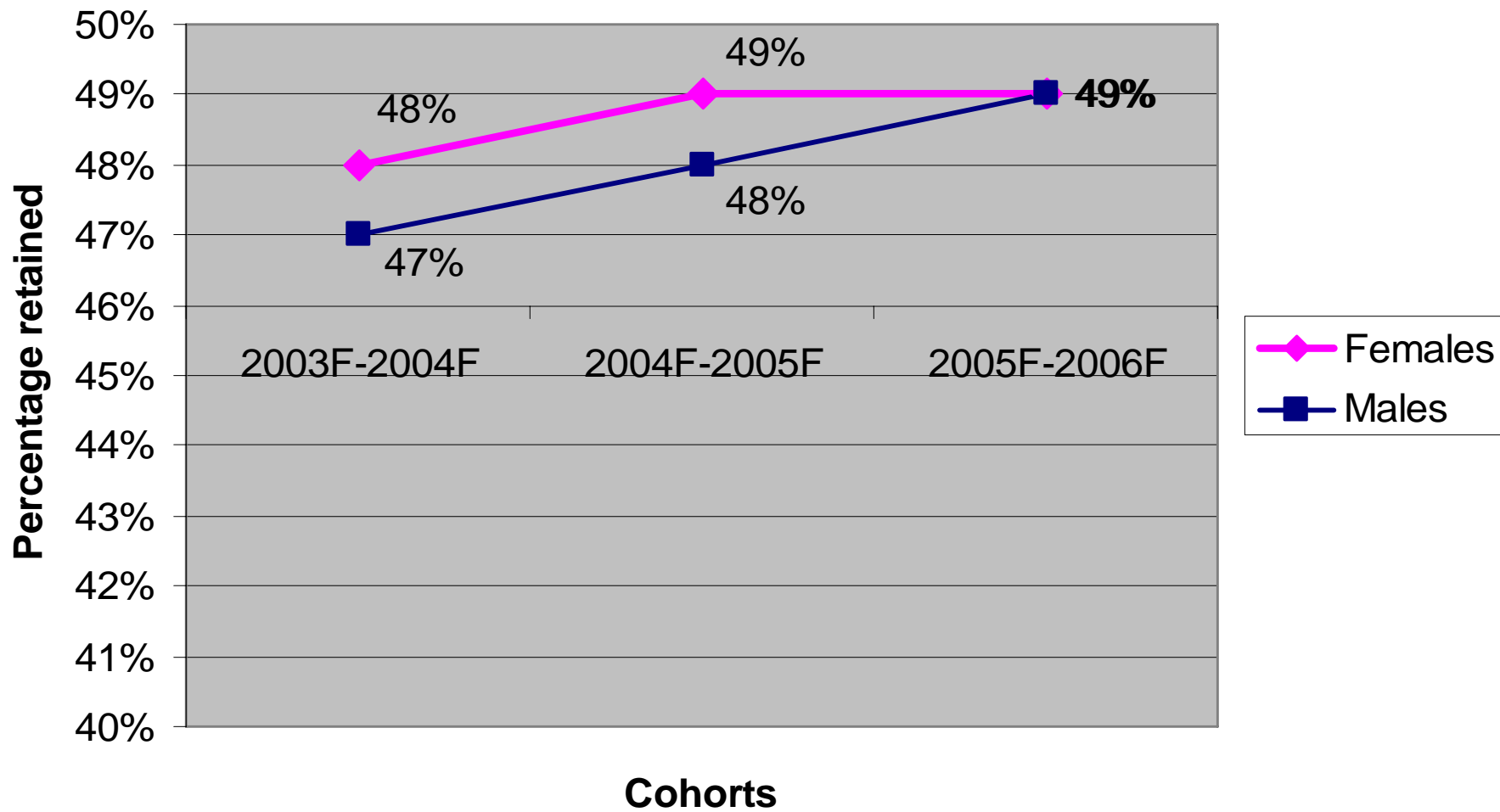
Fall-to-Fall Retention of First-Time Freshmen



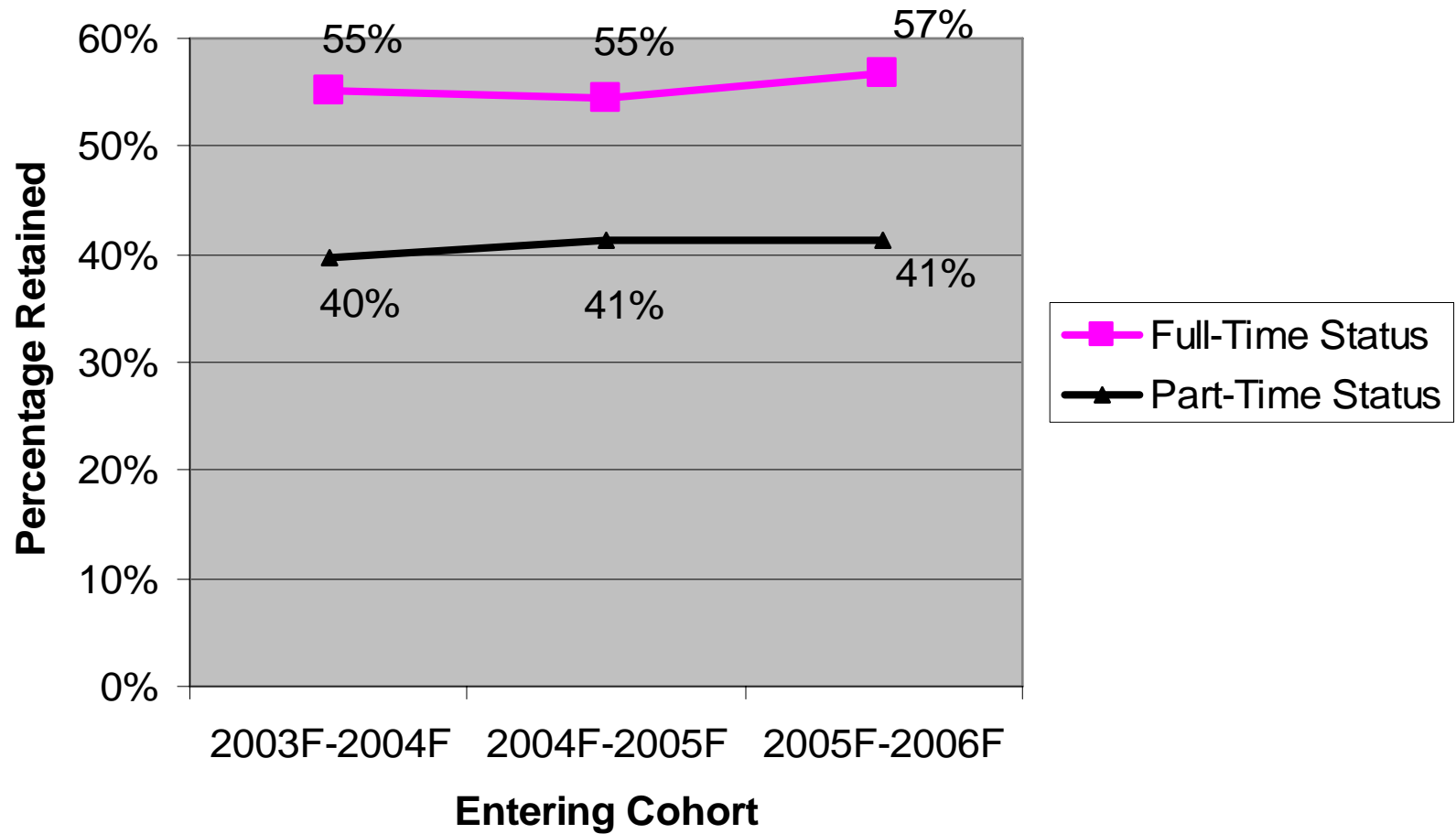
Fall-to-Fall Retention by Age Category



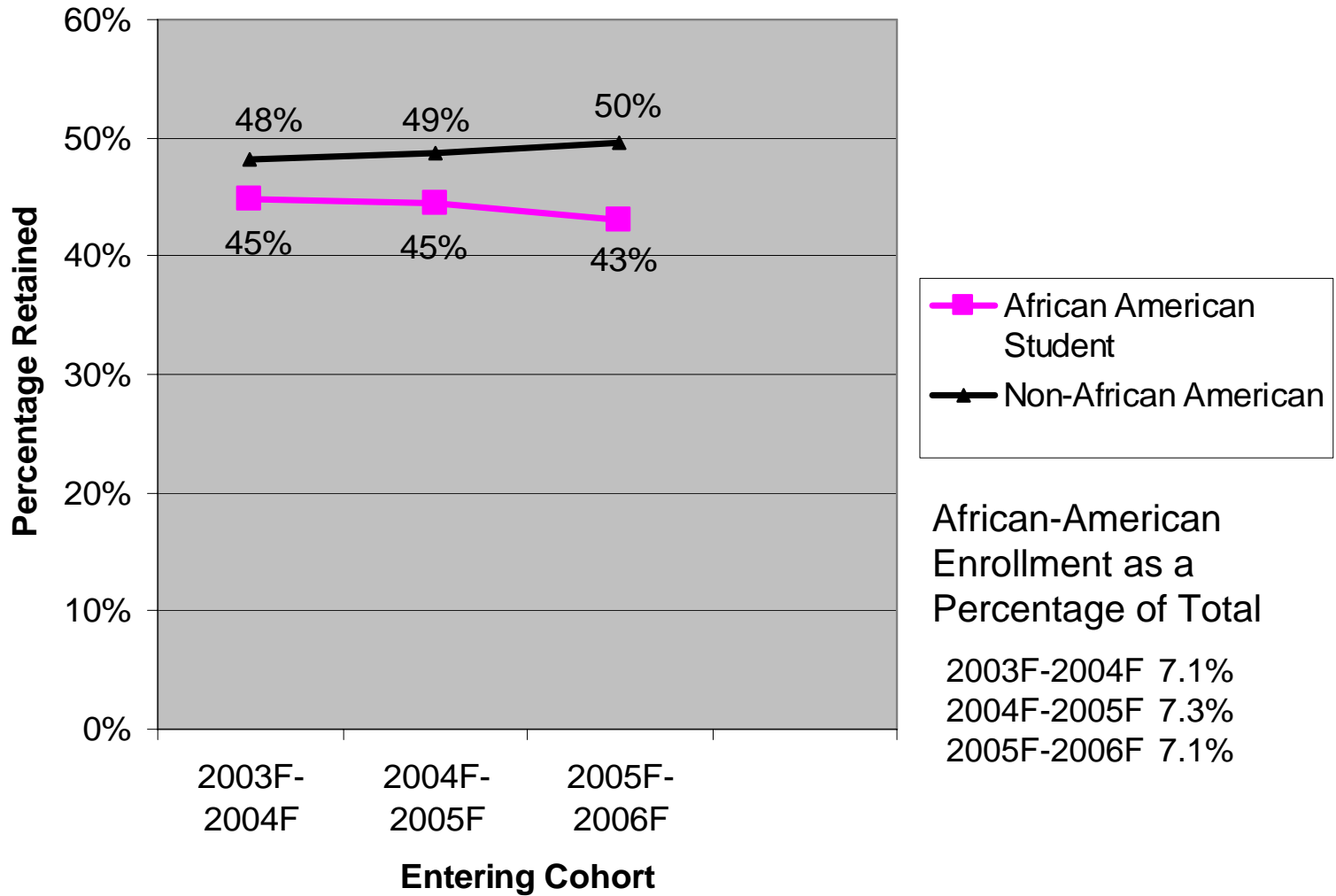
Fall-to-Fall Retention by Gender



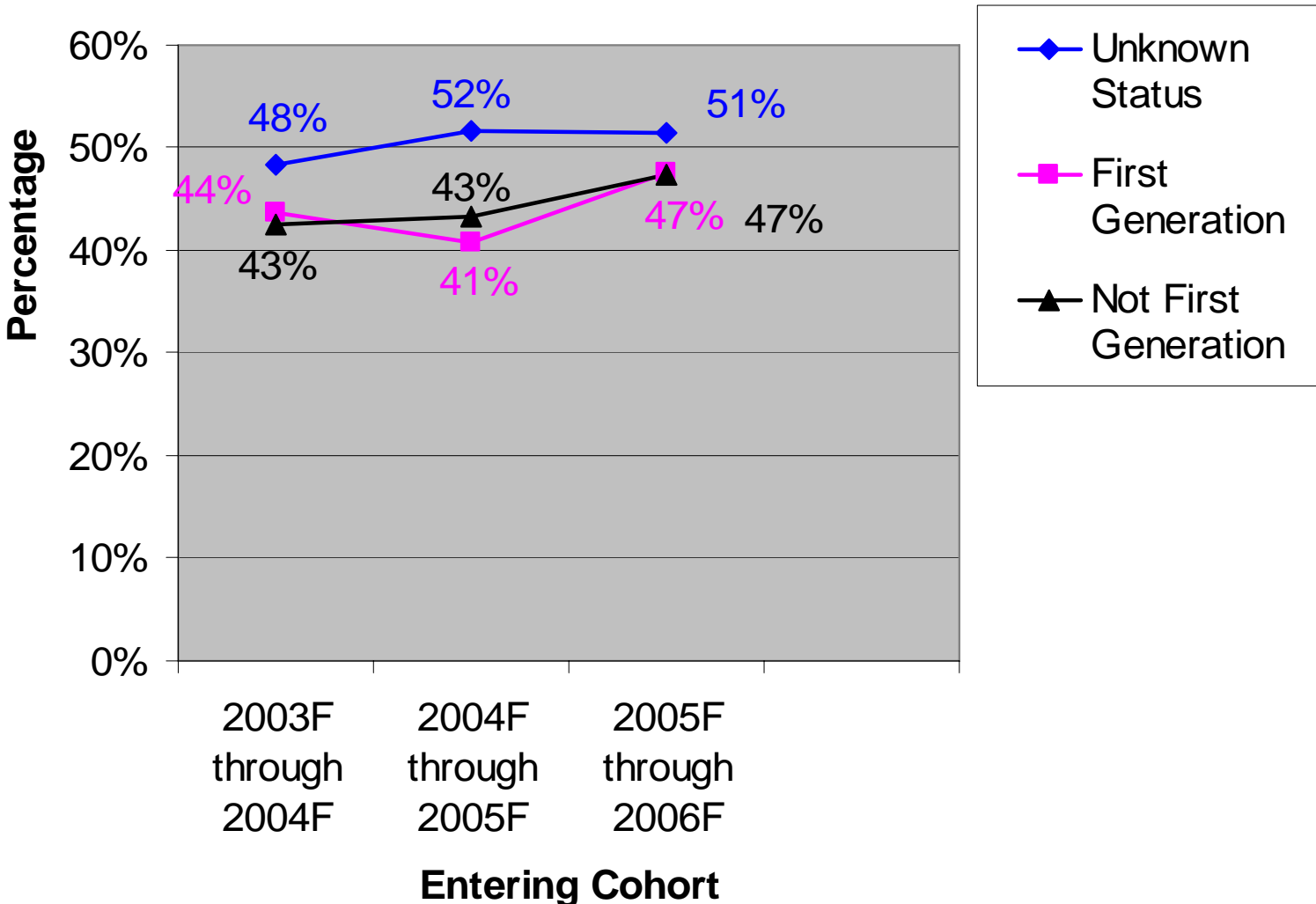
Fall-to-Fall Retention by Full-Time v. Part-Time Status



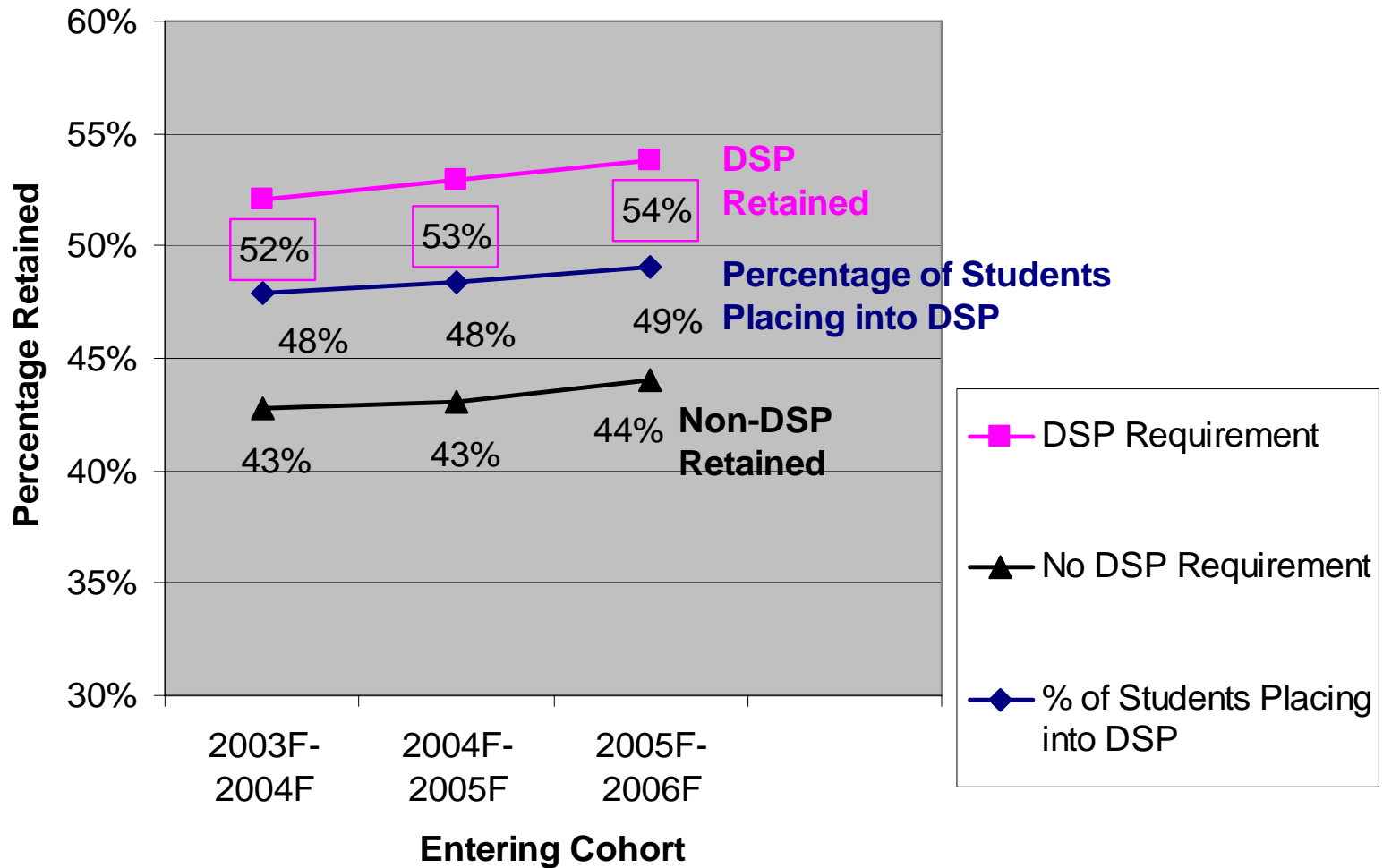
Fall-to-Fall Retention of African-American Students



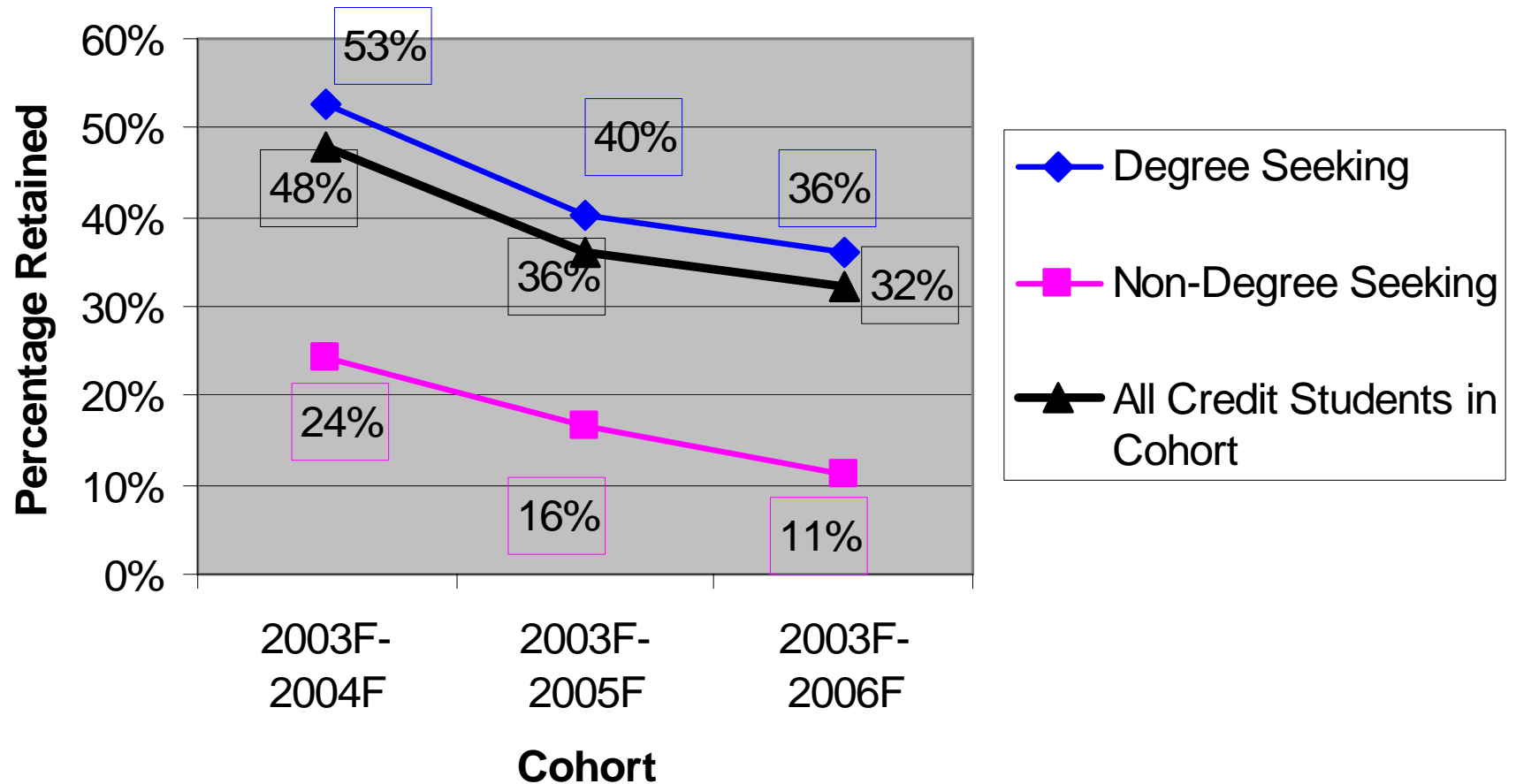
Fall-to-Fall Retention of First-Generation Students



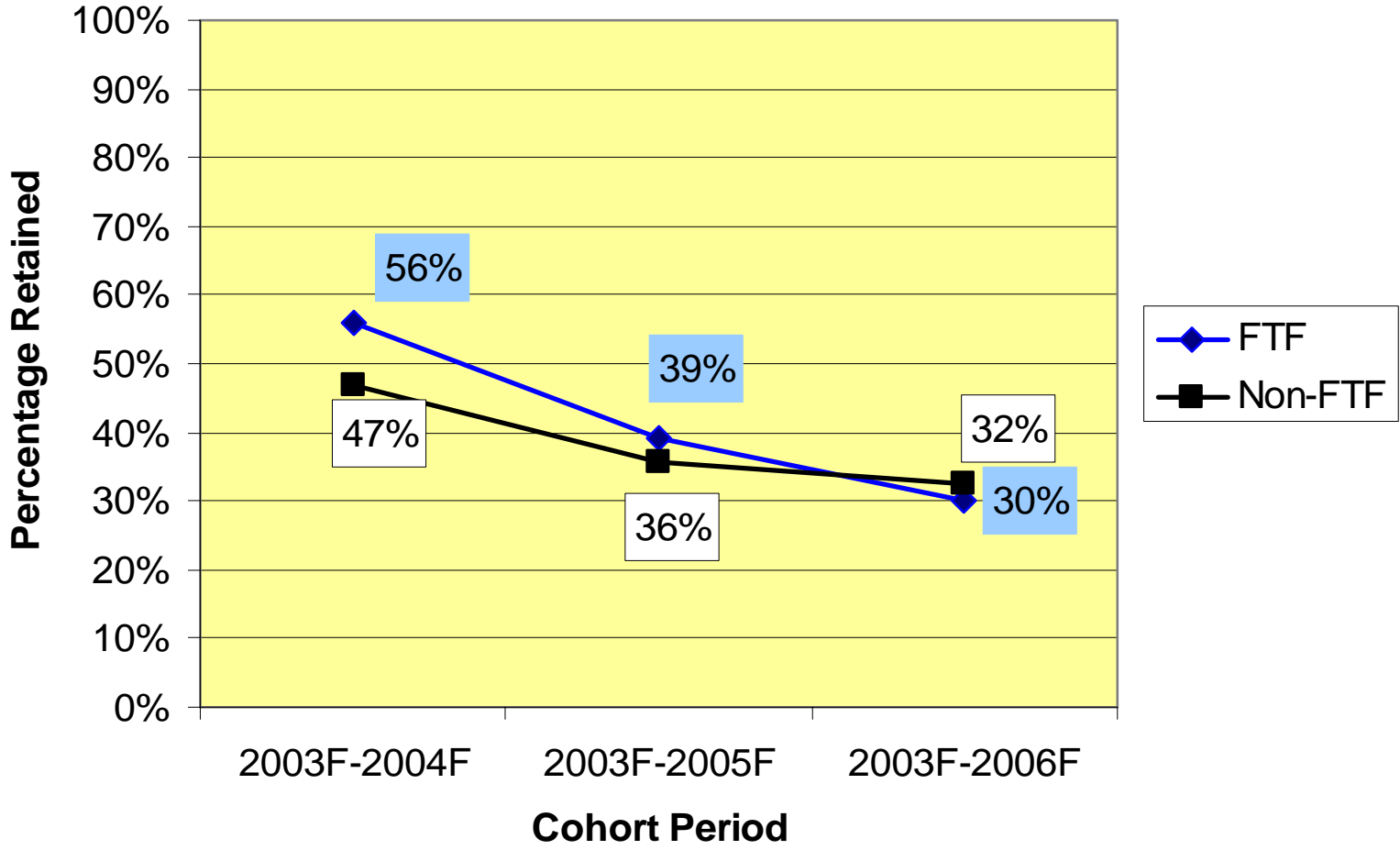
Fall-to-Fall Retention of Students by DSP Placement



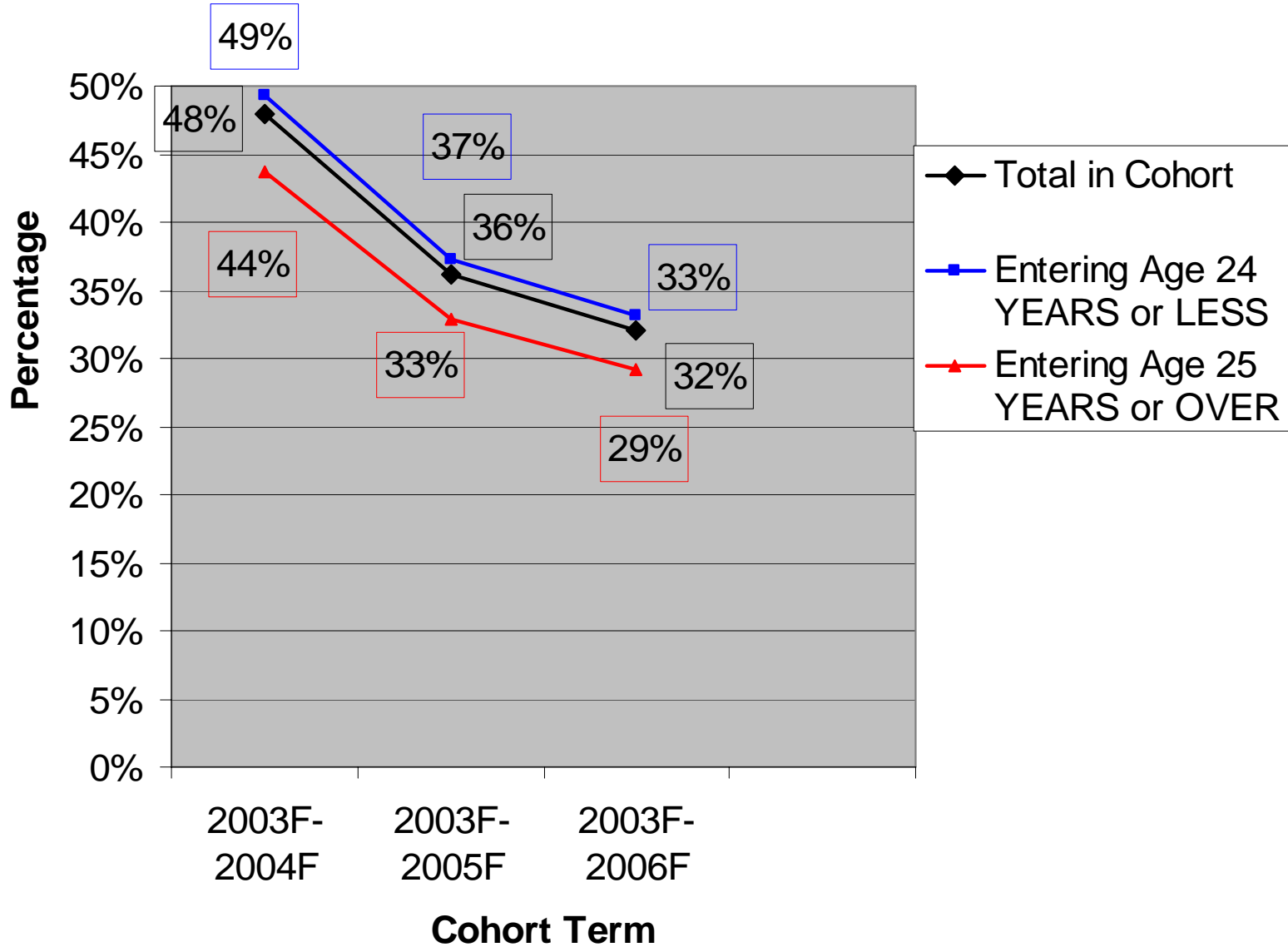
Multi-Year Retention Rates for All Credit Students



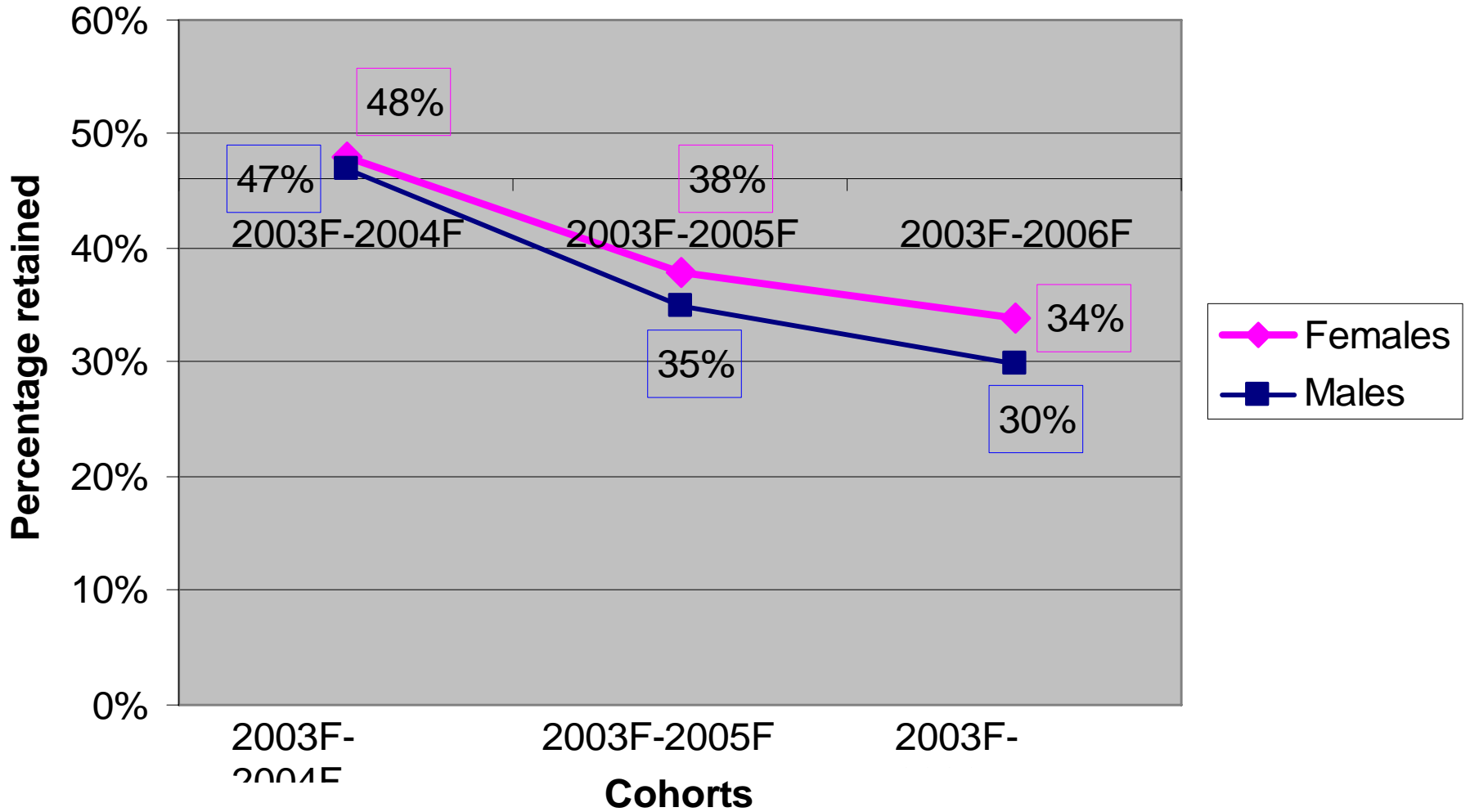
Multi-Year Retention Rates of First-Time Freshmen, Fall 2003 Cohort



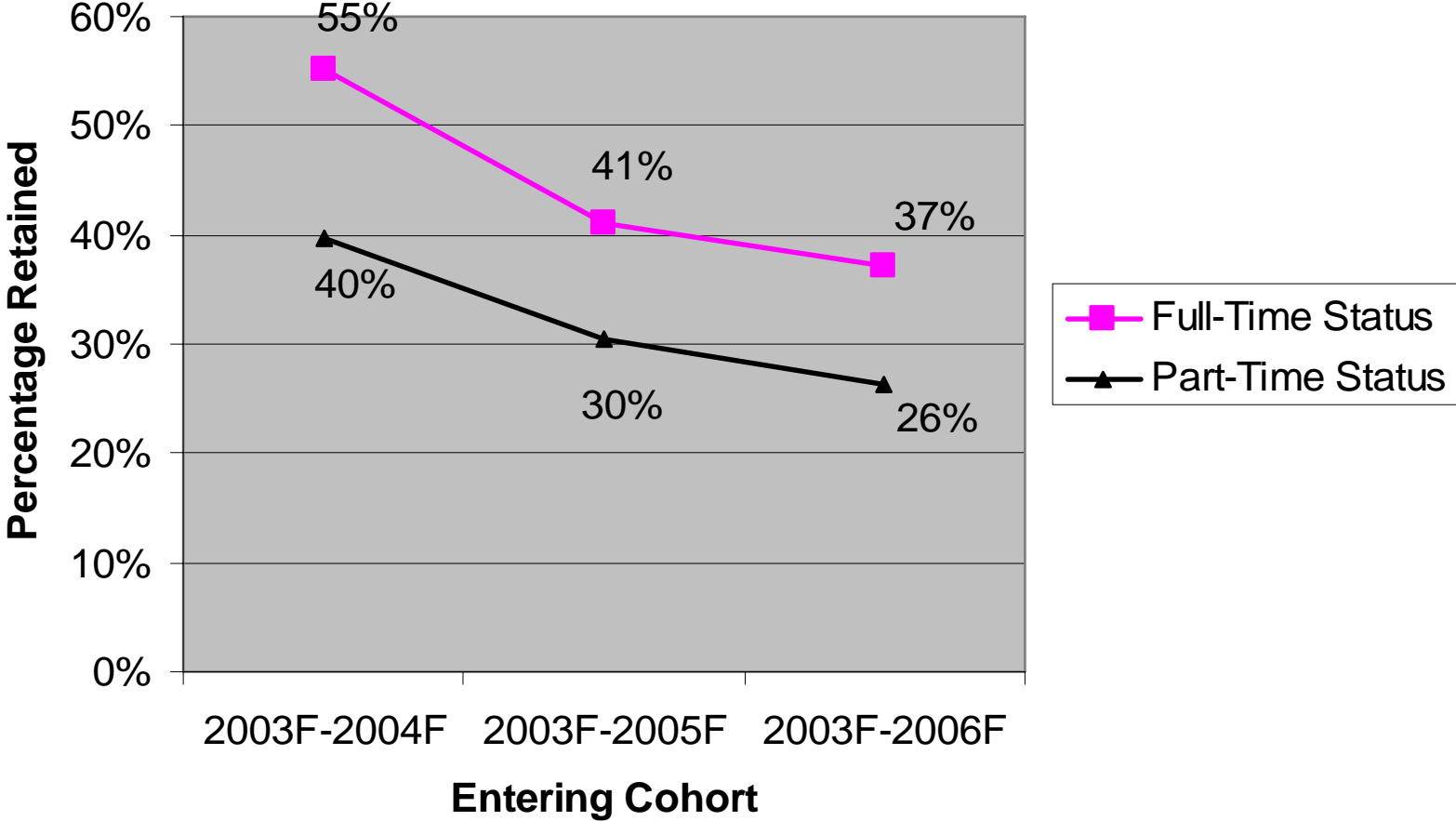
Multi-Year Retention Rates by Age Category



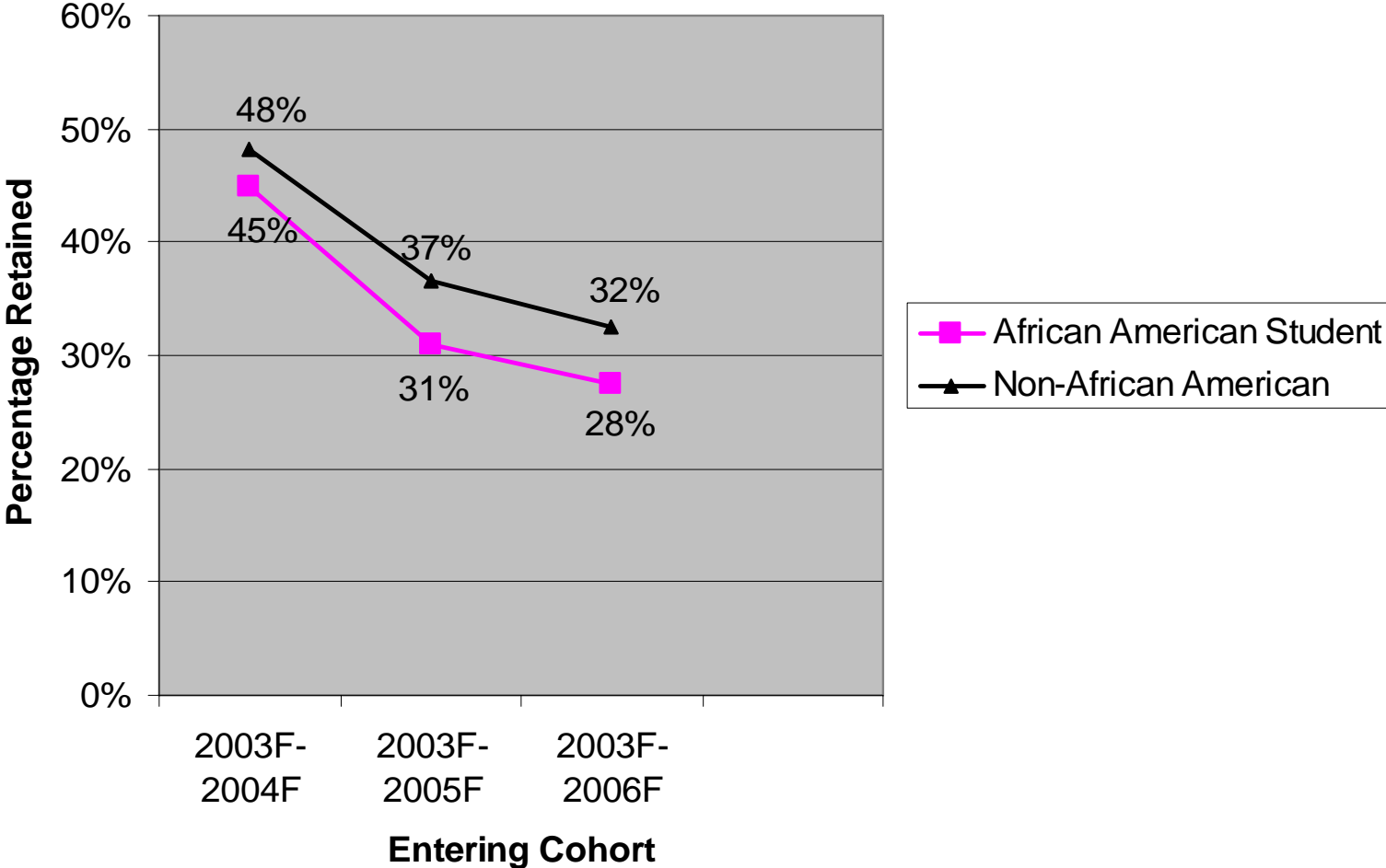
Multi-Year Retention by Gender



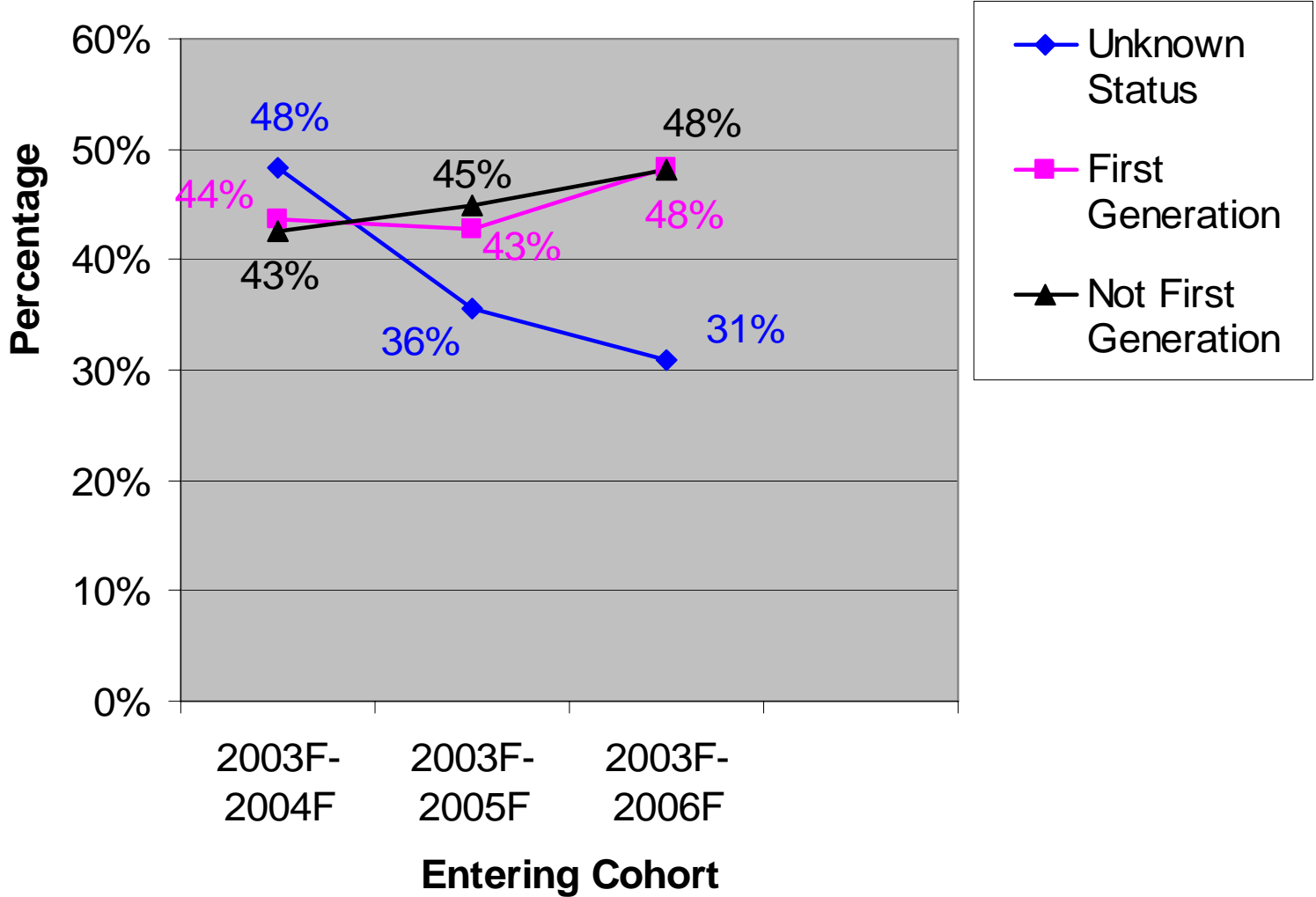
Mult-Year Retention by Full-Time v. Part-Time Status



Multi-Year Retention Rates of African-American Students



Multi-Year Retention of First-Generation Students



Multi-Year Retention of Students by DSP Placement

