

Barracuda Spam Firewall Outlook Plug-In

Introduction:

The Barracuda SPAM appliance has an Outlook Plug-In that allows you to flag e-mails directly without logging into the Barracuda SPAM appliance. Once installed you will see two small envelopes on your toolbar that can be accessed to flag a current message as SPAM (Red, add to blacklist) or as SAFE (Green, add to whitelist).



Step 1:

Click on the following link to take you to the Login screen. Then choose **Get Mail Client Plug-ins Here**.

[Barracuda Log-In](#)



Barracuda Spam & Virus Firewall

Login

Please type your email address and password below. If you are the firewall administrator, type your administrative credentials.

Language:

Username:

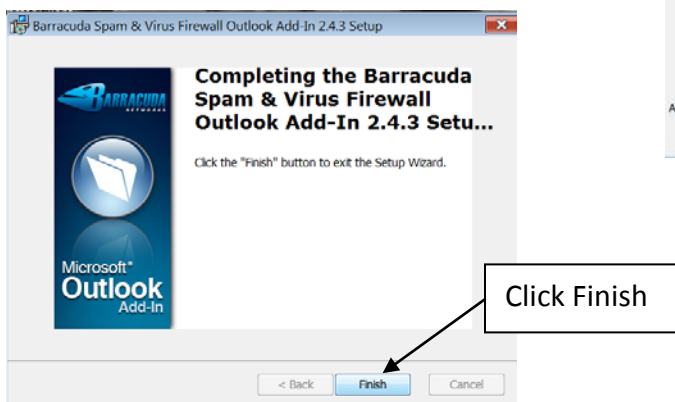
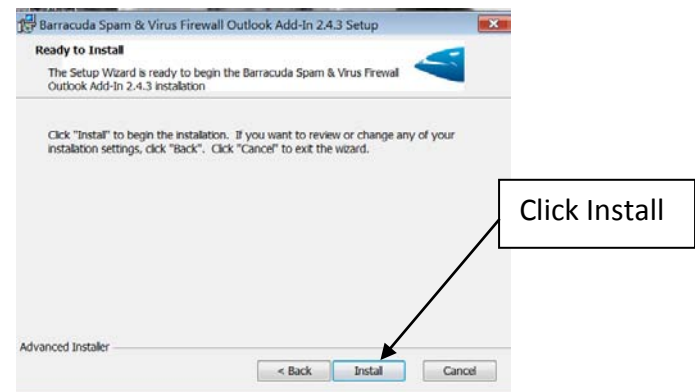
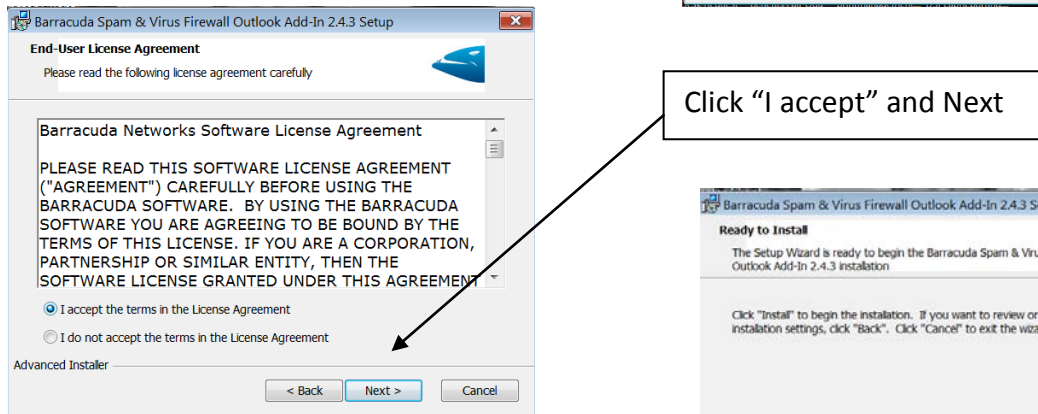
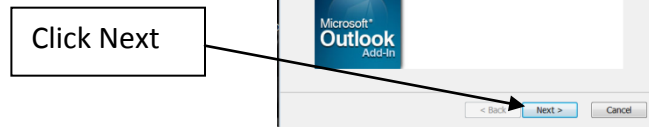
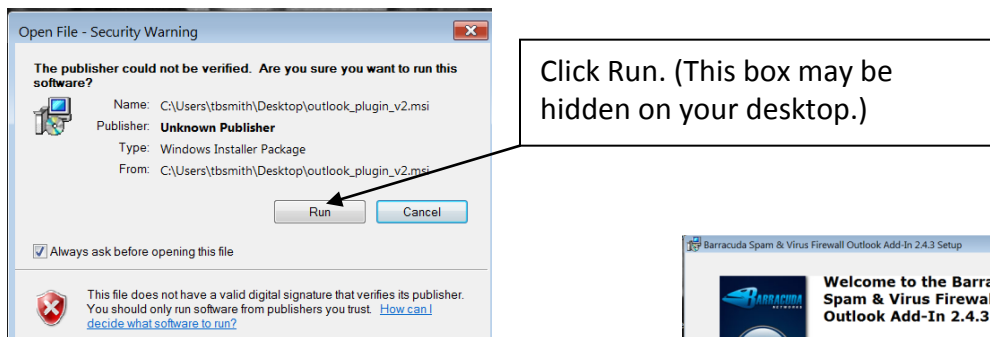
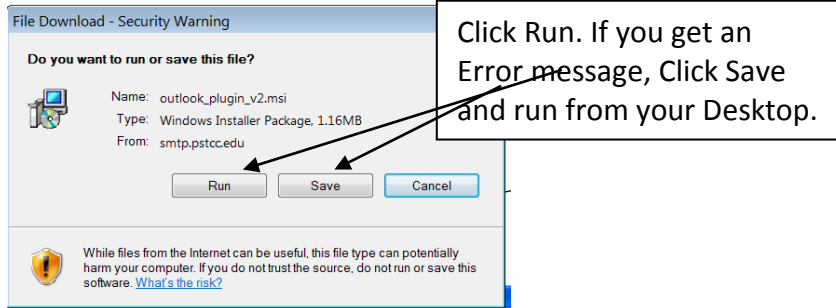
Password:

Note: If you forget your password or do not have a password, type your email address in the **Username** box. Then, click **Create New Password**. A new password will be sent to you.

[Download Outlook Add-In](#)

Step 2 Download Plug-In:

Choose Download Now.



Step 3 Using Plug-In:

Please close Outlook and ReOpen. You will now seeing Barracuda Tools on your toolbar once you reload Outlook. Use these quick buttons to immediately set a selected message as SPAM(**blacklist**) or SAFE (**whitelist**).



To Flag a selected message as **SPAM** (Click **Red**, adds to blacklist)

To Flag a selected message as **SAFE** (Click **Green**, adds to whitelist).