

# Encrypt Flash Drive

## True Crypt

### + Encrypt Volume

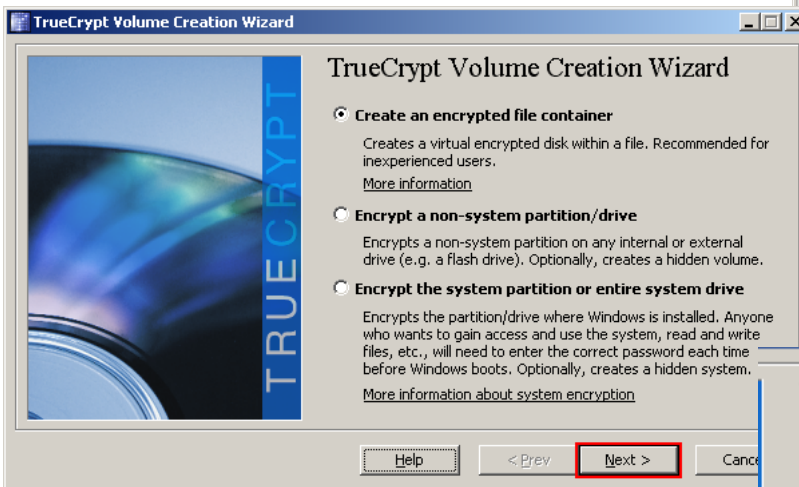
Note: Please refer to the [Beginner's Tutorial](http://www.truecrypt.org/docs/) as an additional reference.  
<http://www.truecrypt.org/docs/>

**Step 1:** Download & Install TrueCrypt & Launch

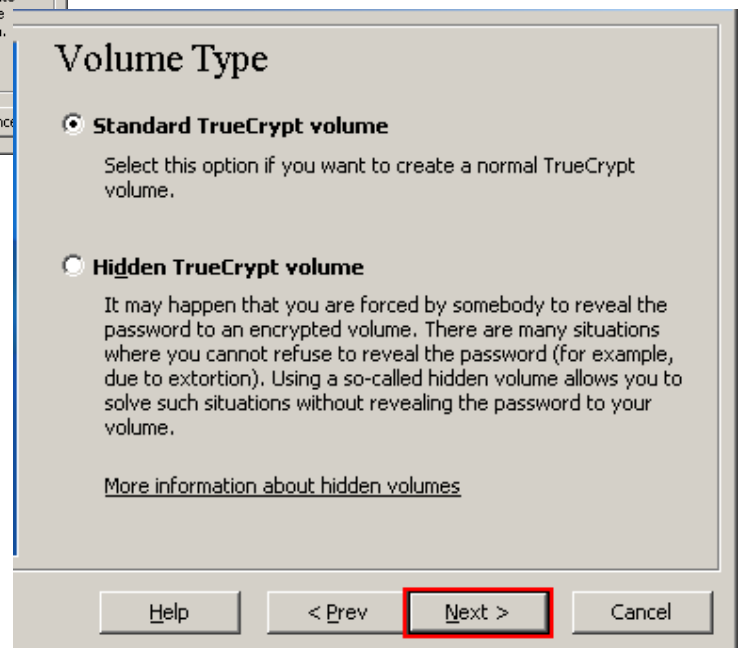
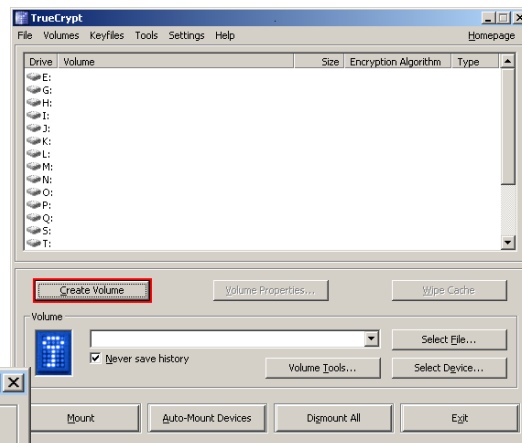
Go to <http://www.truecrypt.org/downloads> and click on the download for your operating system.

**Step 2:** Plug your flash drive into your PC and choose **Create Volume**

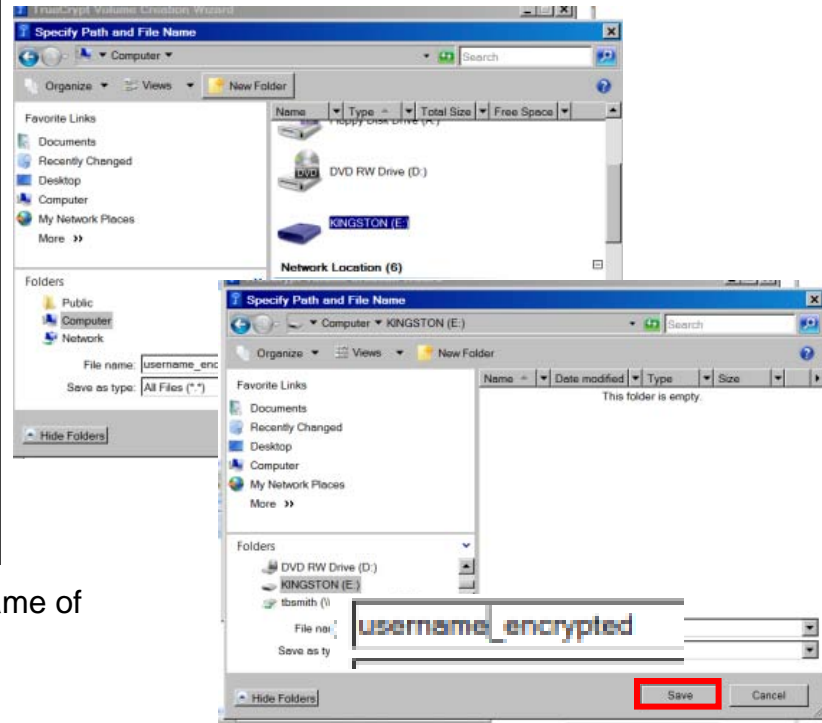
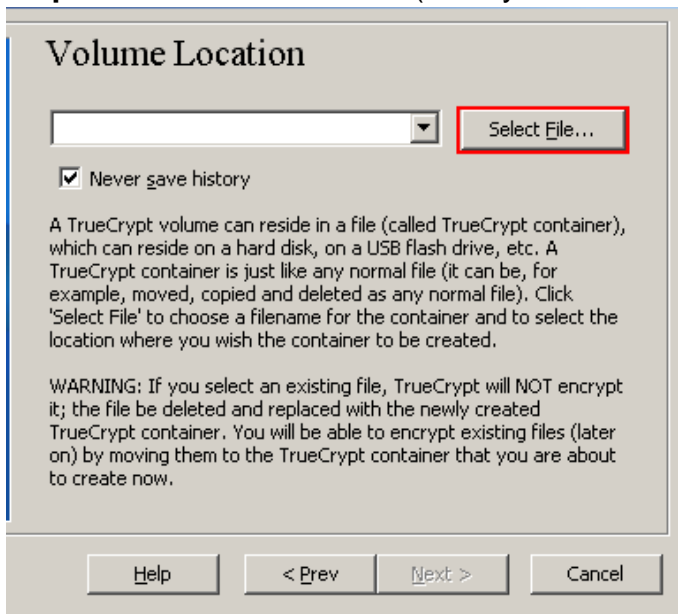
**Step 3:** Choose **Create an encrypted file container**



**Step 4:** Choose **Standard TrueCrypt volume** and choose **Next**



**Step 5:** Choose **Select File** (Here you will choose the drive letter of you flash drive)



Here I have chosen drive **E:** and created a filename of *username\_encrypted* > choose **Save**

**Step 6:** Choose **Next**

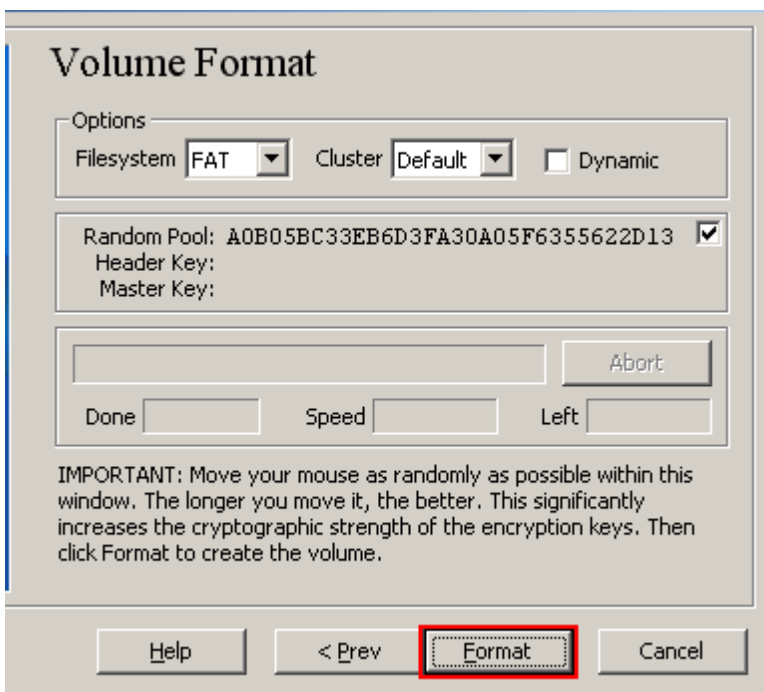


**Step 7:** Choose **Next**

**Step 8:** Set your volume size to almost the entire drive. Here I left 10% free on a 1 GB flash drive. You need to save room for the files to make it a Travel disk (about 5 MB). Then choose **Next**.

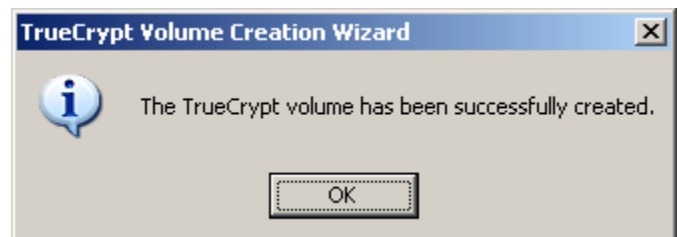


**Step 8:** Confirm a password. Then choose **Next**.

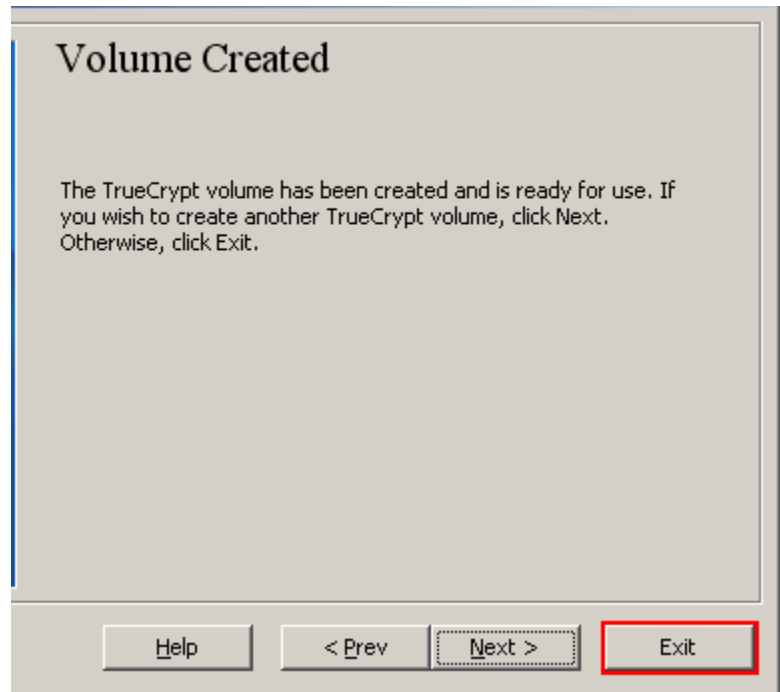


**Step 9:** Choose **Format** on the next screen.

Choose **OK**.

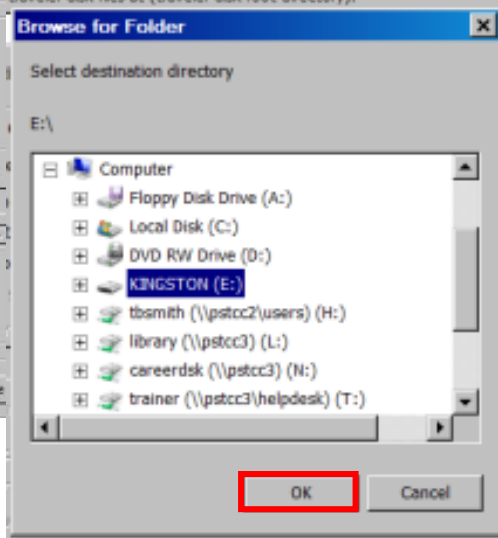
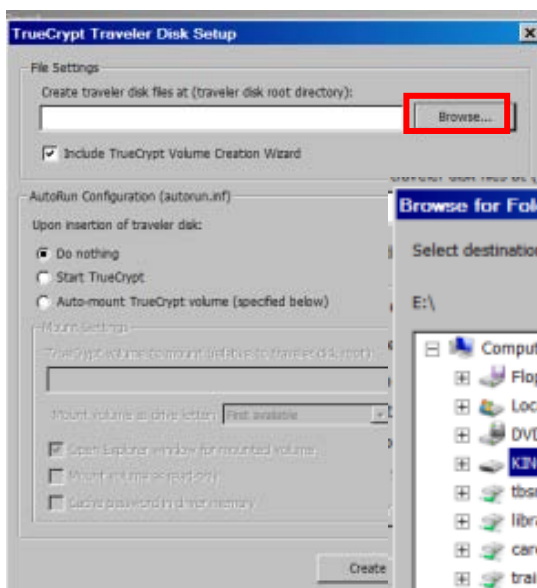
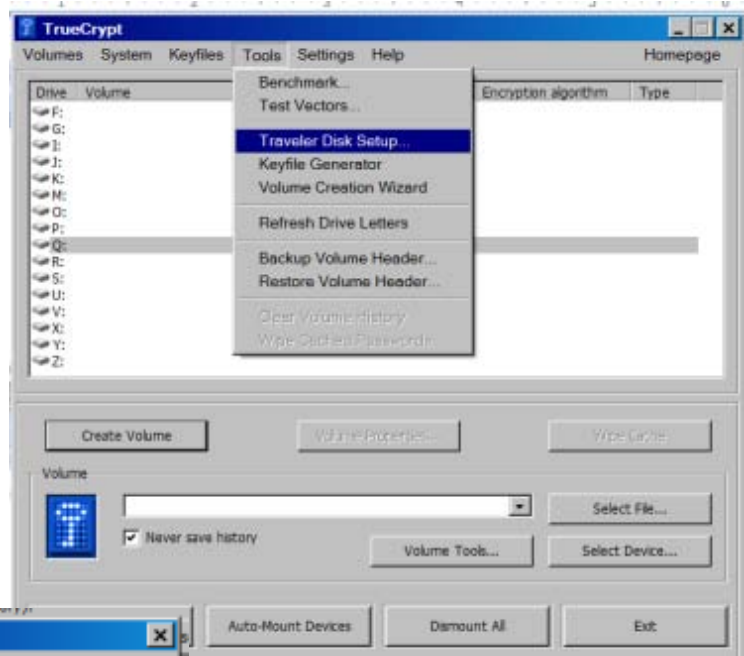


**Step 10:** Choose **Exit** on the next screen.



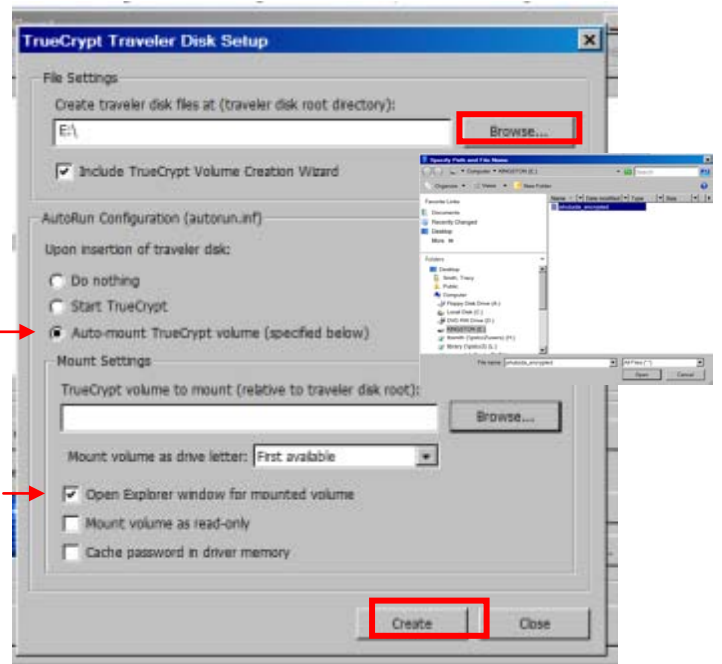
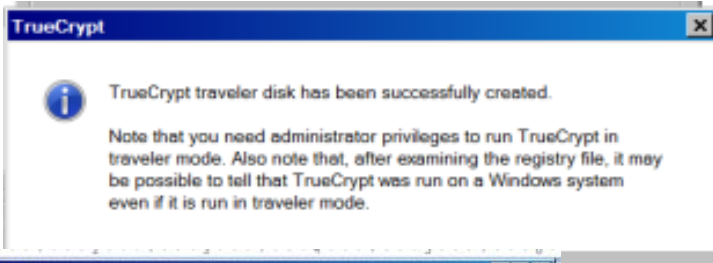
## Make it a Travel Disk

**Step 11:** Go to **Tools** on the Menubar and choose **Traveler Disk Setup**.

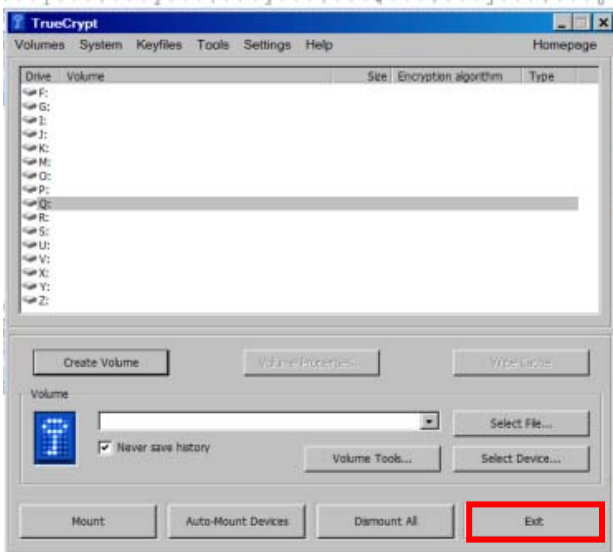


**Step 12:** Click **Browse** and locate your flash drive Drive Letter. Click **OK**.

**Step 13:** Make sure you **Include TrueCrypt Volume Creation Wizard** is checked. Also, **Auto-mount TrueCrypt volume (specified below)** and **Open Explorer window for mounted volume**. Choose **Create**.



**Step 14:** You can then exit out of TrueCrypt. Each time you plug your flash drive into a pc, you will be prompted for your password. Windows Explorer will launch giving you the drive letter assigned to your flash drive encrypted container. Note: Your flash drive with the unencrypted portion will be assigned to the free drive letter preceding the one for the encrypted on. When saving documents, make sure you choose your encrypted portion.



**Make a note of your PASSWORD! If you forget this, you also WILL NOT have access to the information on your flash drive. It will have to be reformatted to be useable again.**

