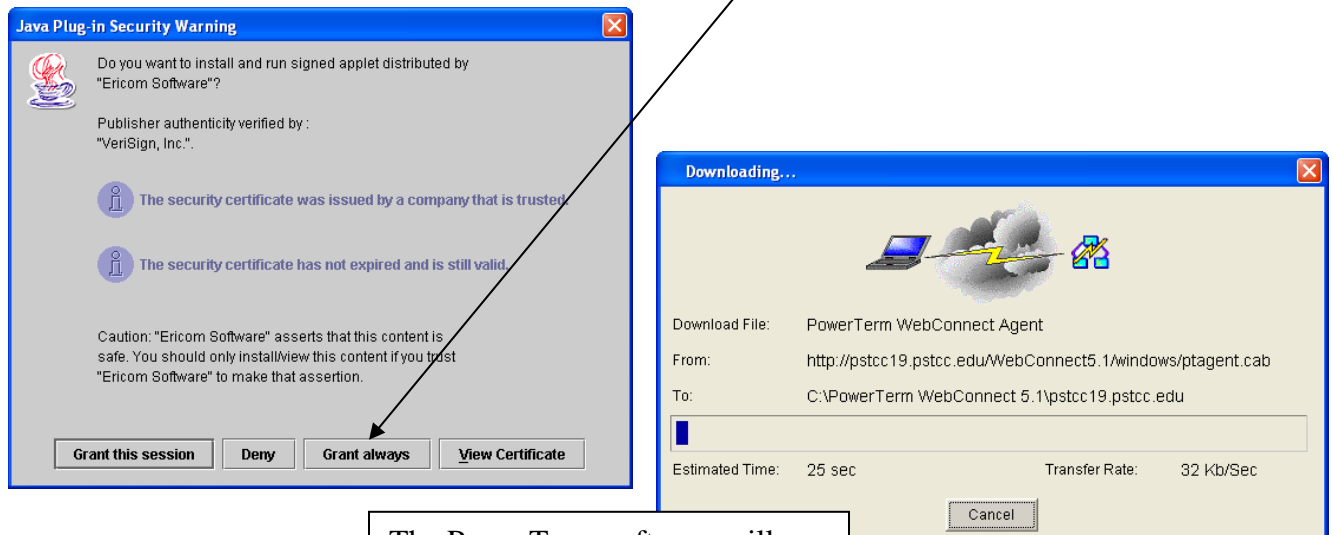


WebConnect Instructions

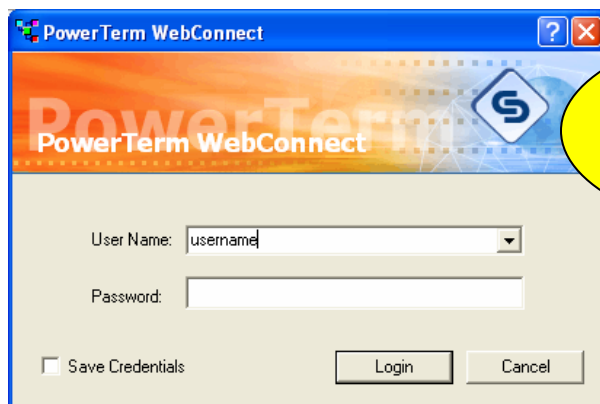
To use WebConnect you need specific privileges to have access. Your supervisor must have authorized this account via the HelpDesk. For further information please contact the helpdesk at helpdesk@pstcc.edu.

1. Using a Web browser go to the following URL <http://www.pstcc.edu/departments/itsc/documents.html> Navigate to the middle of the page and click on the link for "Power Term Connection for WebCT." The first time you open this link you should be prompted with a screen as shown below. Click "Grant always." You should not be prompted again to install this software but if you are, click Grant and continue. Install time will vary depending on your ISP link.



The PowerTerm software will begin to download.

2. During the installation process you will be prompted for a User Name and Password. This is the same network username and password that you use to your email account at Pellissippi State. This is not your SIS, HRS, FRS, or other usernames that are used when connecting to PSTCC1; that prompt will come later.



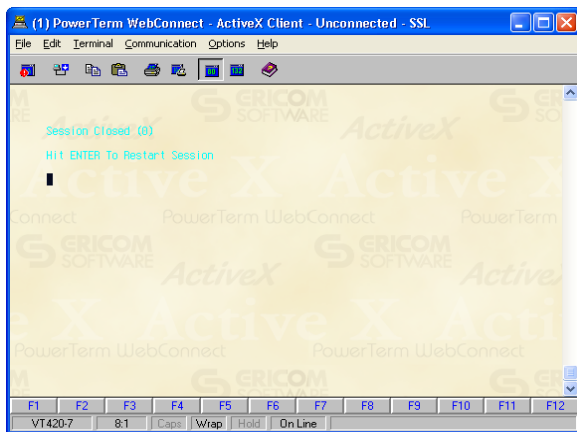
Do not add domain @pstcc.edu

3. Once you have successfully logged into WebConnect you will get the familiar PowerTerm login screen that you see at work. At this point you need to login with your PSTCC1 username and password.

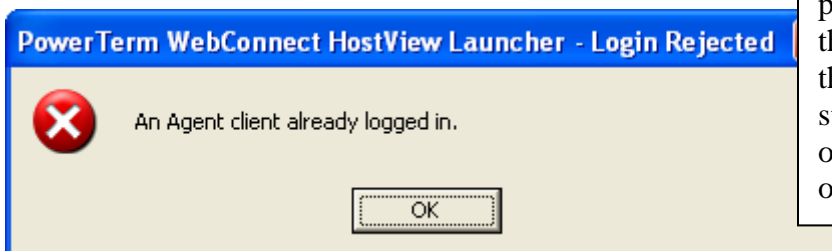


4. Once you are done with your connection to PSTCC1 and you logout with either LO or a menu option you should get the screen below. Just select **Exit** from the **File** menu to exit WebConnect. If you wish to reconnect just press the **Enter** key and you should be prompted for your PSTCC1 username again or

Close your browser and you are finished.



TIP: Please note that the Function keys 9 through 12 have been mapped to perform the same as PF1, PF2, PF3 and PF4 keys for text editing. This will enable laptop users to access these keys as needed.



If you try to log in after a previous session and receive this message – it simply means that the server thinks you are still logged on. You should log off or reboot computer. Only one login per session is