

Histograms and other graphs

Section 2-3, 2-4

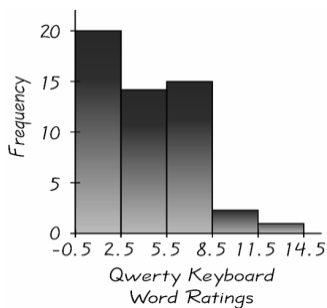
Frequency Table of Qwerty Word Ratings

Rating	Frequency
0 - 2	20
3 - 5	14
6 - 8	15
9 - 11	2
12 - 14	1

1

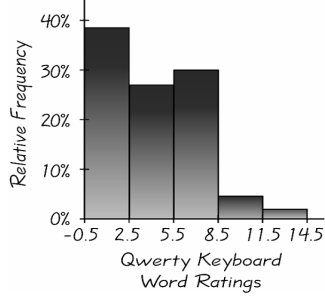
Histogram of Qwerty Word Ratings

Rating	Frequency
0 - 2	20
3 - 5	14
6 - 8	15
9 - 11	2
12 - 14	1

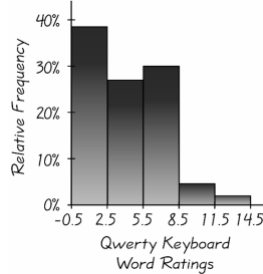
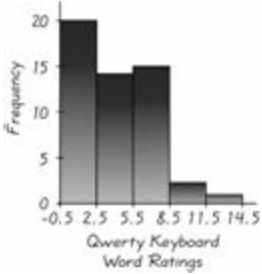


Relative Frequency Histogram of Qwerty Word Ratings

Rating	Relative Frequency
0 - 2	38.5%
3 - 5	26.9%
6 - 8	28.8%
9 - 11	3.8%
12 - 14	1.9%

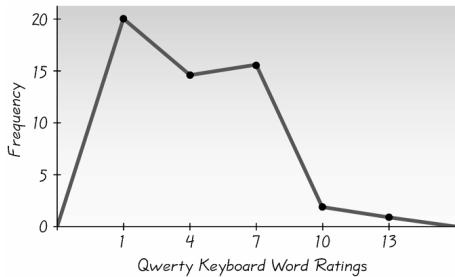


Histogram and Relative Frequency Histogram

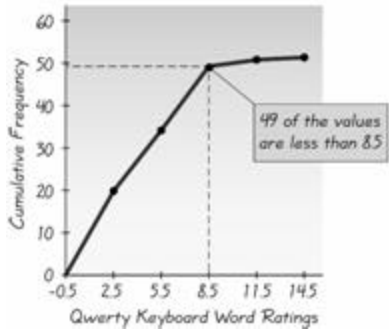


2

Frequency Polygon



Ogive



Triola, Essentials of Statistics, Third Edition. Copyright 2008. Pearson Education, Inc.

7

Dot Plot



Triola, Essentials of Statistics, Third Edition. Copyright 2008. Pearson Education, Inc.

8

3

Stem-and Leaf Plot

Raw Data (Test Grades)

67 72 85 75 89

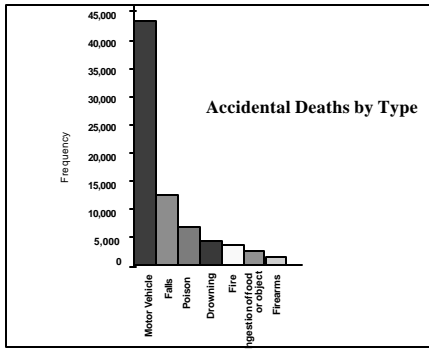
89 88 90 99 100

Stem	Leaves
6	7
7	2 5
8	5 8 9 9
9	0 9
10	0

Triola, Essentials of Statistics, Third Edition. Copyright 2008. Pearson Education, Inc.

9

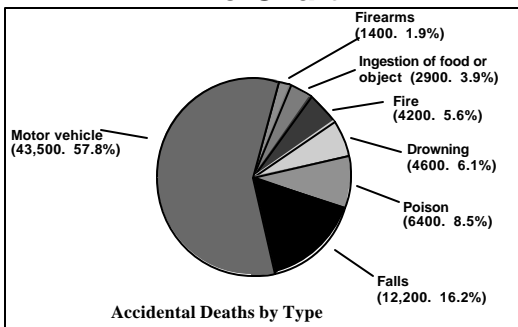
Pareto Chart



Triola, Essentials of Statistics, Third Edition. Copyright 2008. Pearson Education, Inc.

10

Pie Chart

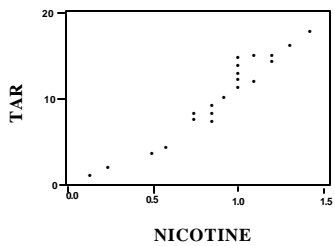


Triola, Essentials of Statistics, Third Edition. Copyright 2008. Pearson Education, Inc.

11

4

Scatter Diagram



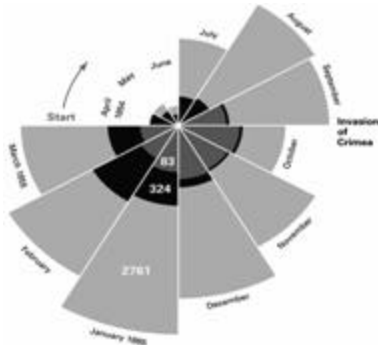
Triola, Essentials of Statistics, Third Edition. Copyright 2008. Pearson Education, Inc.

12

Other Graphs

- ❖ Time-Series Graph
- ❖ Box Plot (another section)
- ❖ Other graphs

Deaths in British Military Hospitals During the Crimean War



5

Stem-Leaf Plots

10 11 15 23 27 28 38 38 39 39
40 41 44 45 46 46 52 57 58 65

Stem-Leaf Plots

10 11 15 23 27 28 38 38 39 39
40 41 44 45 46 46 52 57 58 65

Stem	Leaves
1	015
2	378
3	8899
4	014566
5	278
6	5

Stem-Leaf Plots

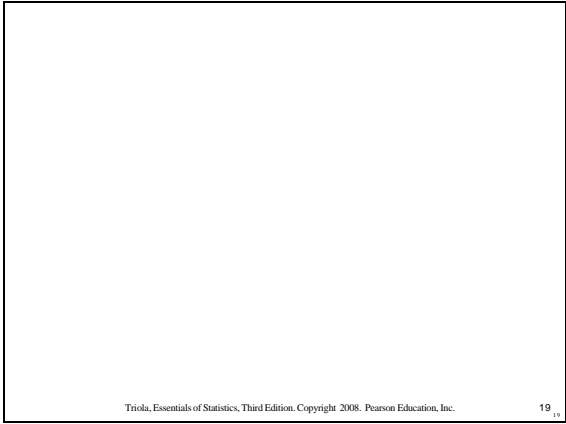
21.7 24.0 22.4 22.4 24.3 22.3 22.6 26.2
24.1 21.8 23.2 23.9 23.5 23.2 23.9 23.8

6

Stem-Leaf Plots

21.7 24.0 22.4 22.4 24.3 22.3 22.6 26.2
24.1 21.8 23.2 23.9 23.5 23.2 23.9 23.8

Stem	Leaves
21.	78
22.	4436
23.	295298
24.	031
25.	
26.	2



7